

Your guide to the



**MyPATH**

VYVGART® Patient Support Program

**Supporting you and your  
gMG patients with the  
VYVGART® treatment journey**



**VYVGART®**  
efgartigimod alfa  
400 mg/20 mL

VYVGART® (efgartigimod alfa) is indicated for the treatment of adults with generalized Myasthenia Gravis (gMG) who are anti-acetylcholine receptor (AChR) antibody positive

# MyPATH, the VYVGART® Patient Support Program, is committed to supporting you and your patients throughout their treatment journey.

The MyPATH Patient Support Program is dedicated to providing comprehensive services and a streamlined experience for both you and your VYVGART® patients.

## The MyPATH Patient Support Program provides:

### THE NURSE CASE MANAGER: YOUR DEDICATED POINT OF CONTACT

Each patient enrolled in the MyPATH Patient Support Program is assigned a dedicated Nurse Case Manager that will provide personalized support based on their needs.

This will also be your dedicated point of contact should you have any questions about the patient support program or your patient's VYVGART® treatment.



### HELPING YOUR PATIENTS UNDERSTAND VYVGART®

The Nurse Case Manager will provide information to your patients about gMG treatment with VYVGART® and the importance of regular symptom tracking using the MG-ADL assessment tool.



### NAVIGATING INSURANCE COVERAGE

The Nurse Case Manager will help you and your patients navigate insurance options and offer support to get coverage in place.



### COORDINATING YOUR PATIENT'S VYVGART® TREATMENT

The MyPATH Patient Support Program will coordinate every aspect of your patient's treatment, from setting up infusions at home or in a clinic to ensuring timely VYVGART® delivery.



### ONGOING COMMUNICATION

The Nurse Case Manager will help your patients continue to track their symptoms and provide ongoing support that can help them maximize their VYVGART® treatment.

If you wish, the MyPATH Patient Support Program will send you information about your patient's MG-ADL scores and how they may change over time.



MG-ADL=Myasthenia Gravis Activities of Daily Living (a tool used to measure gMG symptoms).



# Getting to know the Nurse Case Manager

When you enroll your patients in the MyPATH Patient Support Program, they will be paired with a dedicated, experienced, and knowledgeable Nurse Case Manager who will provide personalized support based on their needs.

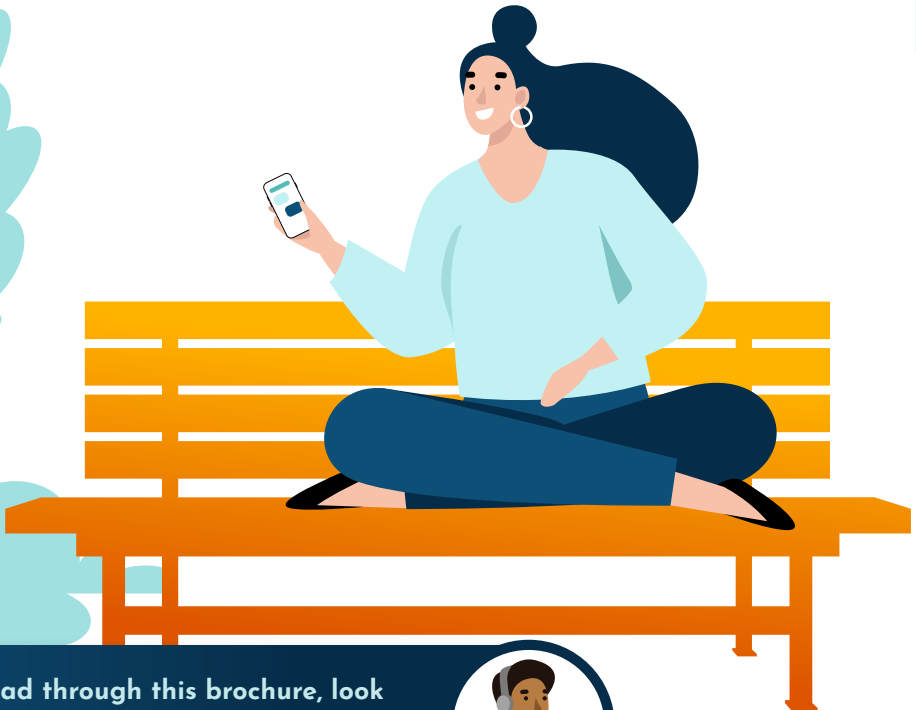


## WELCOME CALL

After you have enrolled your patients, they will receive a welcome call from the Nurse Case Manager who will introduce them to the program.

From this point on, the Nurse Case Manager will be their personal point of contact with the MyPATH Patient Support Program.

The Nurse Case Manager will also be your dedicated point of contact.



As you read through this brochure, look out for this icon for ways your Nurse Case Manager can help you and your patients!





## HELPING YOUR PATIENTS UNDERSTAND VYVGART®

Recognizing the stress your patients experience when receiving a diagnosis and embarking on a new treatment journey, we stand ready to offer our expertise and support.

Our goal is to alleviate their concerns and provide comprehensive answers to any questions they may have, lightening the load for you and your staff.



### The Nurse Case Manager will support your patients by:

- Providing information about gMG.
- Explaining what VYVGART® is and how it can help.
- Preparing your patients for the treatment process: what happens before, during, and after their infusions.
- Setting up VYVGART® infusions in the comfort of the patient's home when it is most convenient for them.
- Showing your patients how to easily track their symptoms using the MG-ADL assessment tool.
- Answering other questions they may have about VYVGART®.

## MG-ADL Symptom Tracking Support

The MG-ADL scores will play a crucial role in determining the optimal timing between VYVGART® treatment cycles, ensuring the best care for your patients.

The Nurse Case Manager will emphasize the significance of regular symptom tracking through the MG-ADL assessment tool, conveniently accessible on tear pad forms and through MyPATH on the MyBayshoreCare™ app.

If you wish, the MyPATH Patient Support Program will send you information about your patient's MG-ADL scores and how they may change over time.



MG-ADL=Myasthenia Gravis Activities of Daily Living.



## NAVIGATING INSURANCE COVERAGE

We understand that dealing with insurance plans can be difficult. Our commitment is to assist you and your patients with navigating insurance coverage and accessing financial assistance.



### The Nurse Case Manager will:

- Work directly with you, provincial government drug plans, and insurance companies to explore the coverage options for your patients.
- Support your patients in securing coverage.
- Provide you and your patients with regular updates on the status on their coverage.
- Help your patients understand their insurance coverage requirements.



## COORDINATING YOUR PATIENT'S VYVGART® TREATMENT

With the expertise of the dedicated Nurse Case Manager, we carefully navigate the complexities of treatment coordination.

From scheduling appointments, facilitating convenient in-home or clinic-based treatment based on patient's preference, to ensuring timely delivery of medications, the MyPATH Patient Support Program streamlines the entire treatment process.



### The Nurse Case Manager will:

- Discuss the infusion options with your patient.
- Notify the scheduling team of your patient's preferred treatment location.
- Send your patient's prescription and coverage info to a specialty pharmacy.
- Ensure VYVGART® is delivered in time for your patient's infusion.



## ONGOING COMMUNICATION

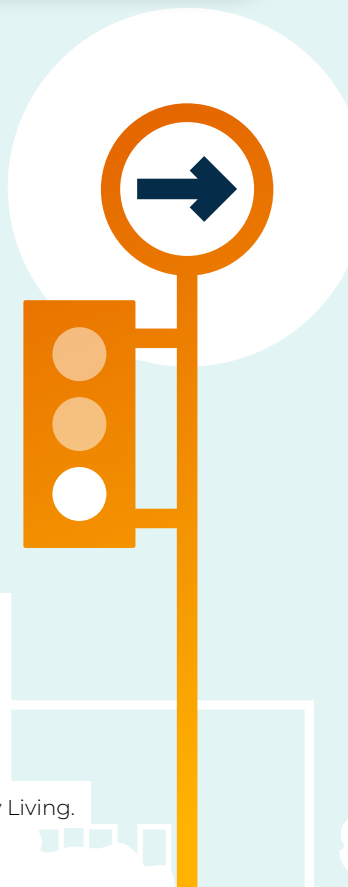
The Nurse Case Manager will provide your patients with consistent support to help them get the most out of their VYVGART® treatment.

You will also be informed about your patient's treatment status and their MG-ADL symptoms by the Patient Support Program at a rate that is determined by you.



### The Nurse Case Manager will:

- Keep you informed regarding your patient's treatment status and their MG-ADL scores to help you plan your patient's VYVGART® treatments accordingly.
- Support your patients in continuing to track their symptoms using the MG-ADL assessment tool.
- Equip your patients with other tools and resources they can use to take an active role in their treatment.



MG-ADL=Myasthenia Gravis Activities of Daily Living.

# Here for your patients

## every step of the way

### whenever they need us throughout their journey.

The MyPATH Patient Support Program offers multiple enrollment options that you can choose from based on your needs and preferences. Completed enrollment forms can be emailed, faxed, or sent digitally.

To enroll by fax: 1-877-697-2844

To enroll by email: [info@mypathpsp.ca](mailto:info@mypathpsp.ca)

Call us for additional support

Monday to Friday, 8 a.m. – 8 p.m. EST

**Phone: 1-877-697-2840**



Please **scan here** to consult the Product Monograph for contraindications, warnings, precautions, adverse reactions, interactions, dosing, and conditions of clinical use. The Product Monograph is also available by calling argenx Medical Information at 1-800-731-8917.



VYVGART is a registered trademark of argenx.

The MyPATH Patient Support Program is a VYVGART<sup>®</sup> offering brought to you by argenx Canada.

MyBayshoreCare<sup>™</sup> is a trademark of Bayshore Specialty Rx Ltd.

© 2024 argenx CA-VYV-23-00041E January/24. All Rights Reserved.

argenx

MyPATH

MEMBER OF  
INNOVATIVE MEDICINES CANADA

VYVGART<sup>®</sup>  
efgartigimod alfa  
400 mg/20 mL